

SIGNATURE ON THE STONE

Our company, which has been trying to represent our country in the best way both at home and abroad since 1982, continues its consistent growth day by day. With its expanding product range, it meets the needs of official and private institutions such as artificial granite, artificial marble, facing work, precast elements and concrete parquet.



ÖZKUL

Taşu Atılan İmza





About us

Özkul Beton started floor tile production in a small factory in 1982. With the mission of permanent customer satisfaction, reliability and quality, it started make better quality, faster and more durable production with its modern production facilities created by importing state-of-the-art machinery and equipment from Italy in its 5th year. Our company, which always aims to grow and develop, continued to import the latest technology in its field from Italy and Germany, and today, with a total of 15.000 m² closed and 70.000 m² open area, 7 full automation production facilities, the manufacture of TSE certified Artificial Marble and Floor Tiles (Single-Two Layers), various optional special molded Concrete Elements, Interlocking Paving Stones, Paving Stones, Garden and Road Kerbs, Fence Poles, Flowerpots, Windowsills, Parapet, Coping, Skirting, Decorative Garden Elements, L-type and two-piece Stair Treads, Wasch Concrete (Washing Concrete) products, Pumice Block Wall Elements, Telecom Manholes, Anchored Facing Work and Environmental Furniture, and they are sold both in the country and exported to many countries especially to Germany, France, Romania, Albania, Libya, Iraq, Russia and Turkish Republics.

In addition, with our 41 years of experience, we can produce your special orders according to your requests with the know-how, equipment and staff we have.

Our company, which has been trying to represent our country in the best way both at home and abroad, continues its consistent growth day by day. With its expanding product range, it meets the needs of new structures and projects by offering more than 600 types. Our company has adopted the principle of contributing to the country's economy by expanding its targets both in the field of employment and in exports with new businesses to be established in various places for its constant growth.

1982

1st Year

We started the production of floor tiles with two small hand press machines in our manufacturing plant in Ankara - Aktaş. We aimed to grow rapidly and confidently.

Our First Steps in the Sector



5th Year

1987

With the latest technology production lines imported from Italy. We became the leader in Ankara with our TSE-certified products and announced our name throughout the country. We aimed to offer the best products to our customers by producing more durable and better quality products rapidly. In addition to the floor tiles, we also started to produce ready-made steps. At the beginning of 1988, we doubled our capacity with our new production lines by carrying our production from our factory in Aktaş to our factory at 22nd KM of Çubuk Road (Esenboğa Airport Junction). We have become a respected and sought-after brand throughout the country.

We switched to a modern production system



Capacity Increase

10th Year

Since our customer portfolio is mainly composed of municipalities, cooperatives and contractors, we have invested in new technology and increased our capacity in order to respond to increasing customer demands in a timely manner.

1992



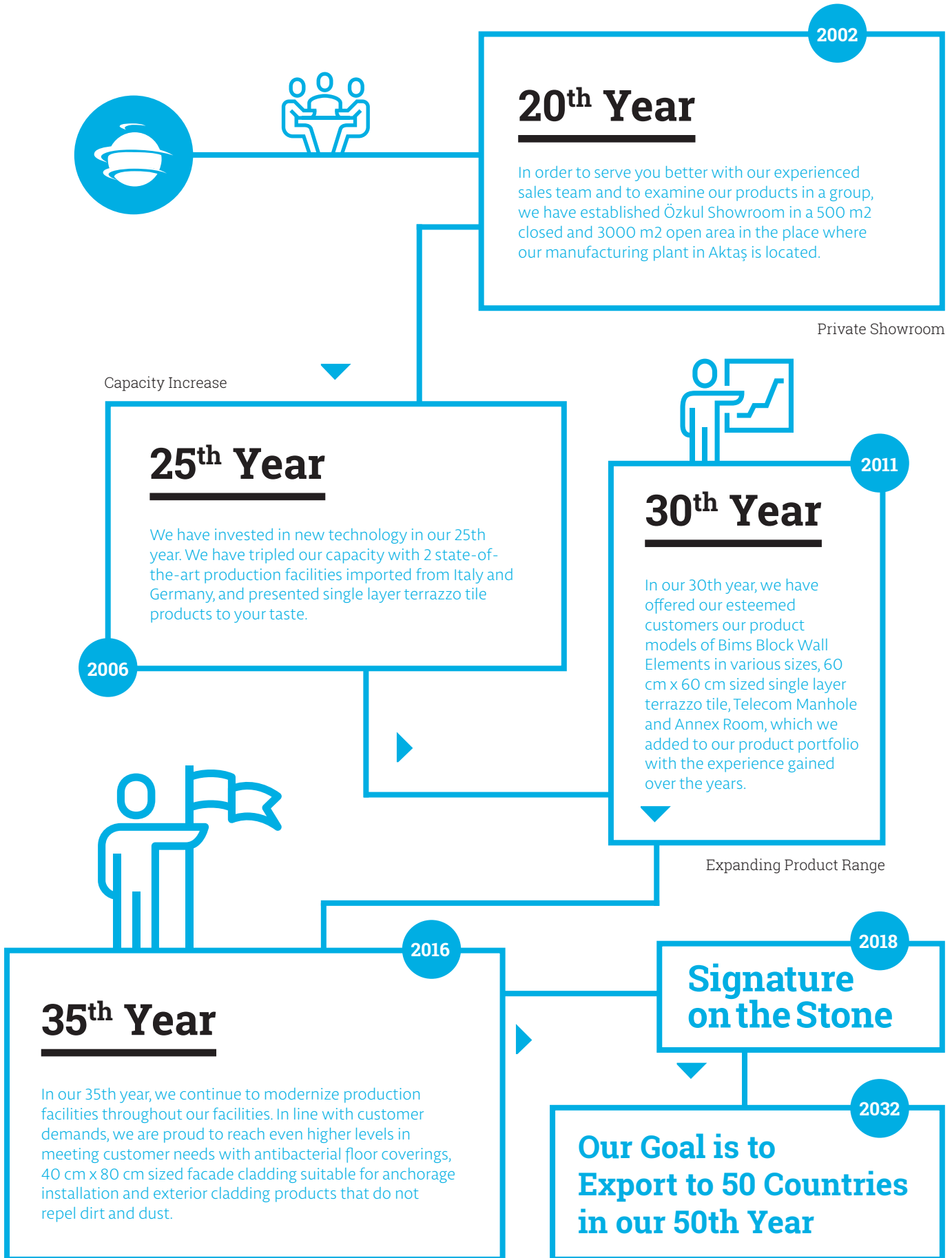
15th Year

1997

In line with the high demand from our customers, we decided to produce lock parquet, kerbs, environmental elements, flower beds and decorative concrete elements. We increased our production capacity by 50% with the lock parquet mass production facility imported from Germany and the automatic tile production facility imported from Italy.

Attractive Locations

New Products, New Technology



TERRAZZO

COLLECTION



Floor Coverings

Terrazzo Collection

Our terrazzo collection, which we produce using selected natural stones from all over Turkey, is aesthetic, durable, effortless and easy-to-maintain products. It is resistant to abrasion and impact. It has high bending and tensile strength. It is fireproof and not affected by seasonal changes.

Our terrazzo collections, which are produced using the latest technology, consist of two separate collections as one-layer and two-layer.

The single layer terrazzo collection, which is the work of the new generation technology, is produced by applying vacuum at traditional higher pressure values, so their strength is higher. Since they are thinner and lighter, they reduce transportation costs by half and provide a great advantage in labor and assembly costs.

Single Layer

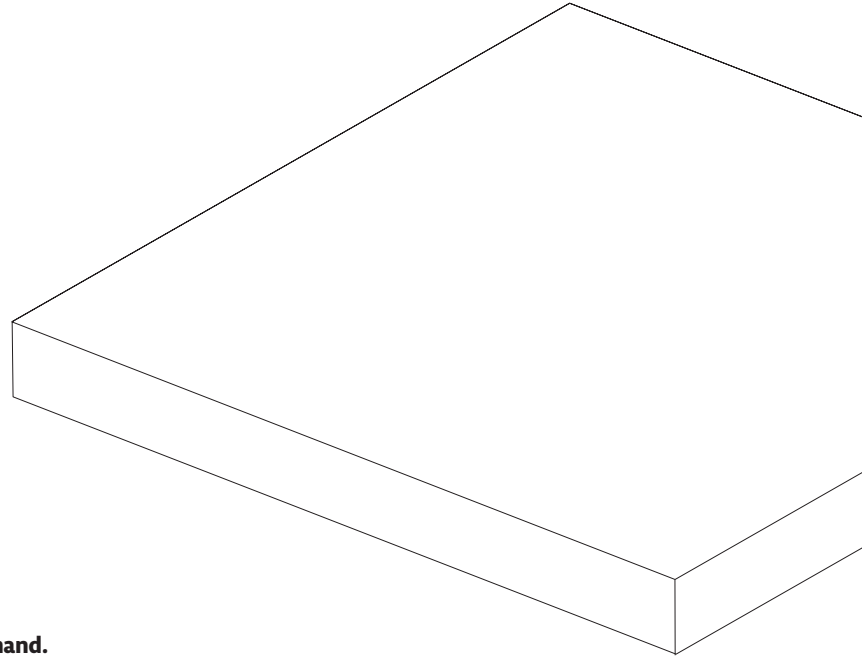
Our Single Layer Terrazzo models are designed to be used in all indoor and outdoor areas and are special products sized 33x33, 30x60, 40x40, 40x80 and 60x60 cm.

Two-Layer

Our Two-Layer Terrazzo models are used on wet indoor floors, terraces and outdoor areas and are produced in sizes of 30x30, 40x40, 40x60 and 50x50 cm.

Special sized products are produced in line with the demand.

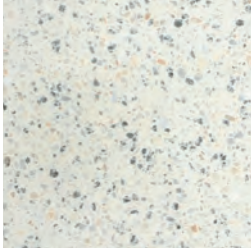
All terrazzo products are optionally undergone polishing, patinato and sandblasting processes.



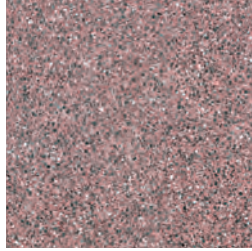
TERRAZZO

ARTIFICIAL GRANITE COLLECTION

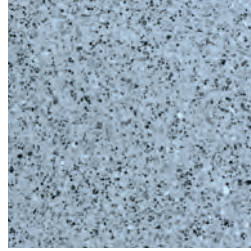
These products have properties arising from the natural structure of the aggregate used.



1837 artificial



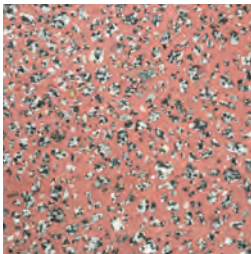
1851 artificial



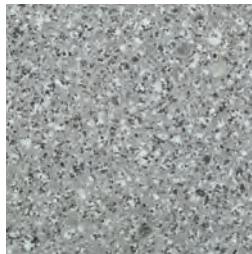
1855 artificial



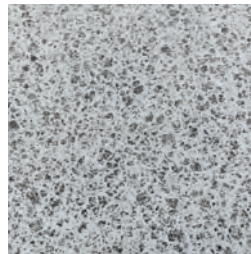
1888 artificial



1895 artificial



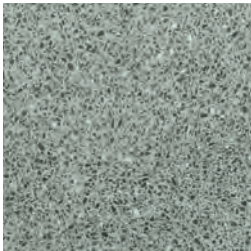
1896 artificial



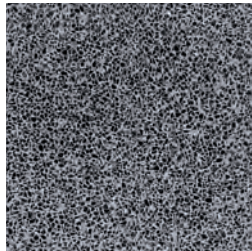
1936 artificial



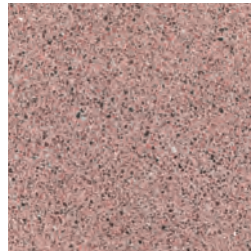
1937 artificial



1952 artificial



1953 artificial



1964 artificial

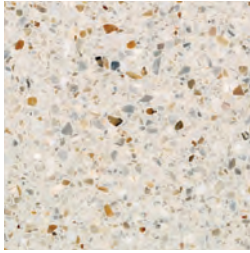


1973 artificial

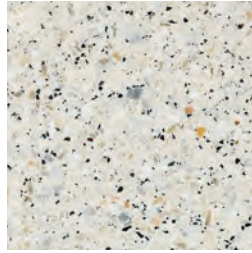
TERRAZZO

ARTIFICIAL MARBLE COLLECTION

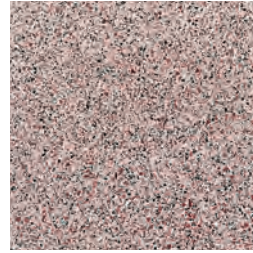
These products have properties arising from the natural structure of the aggregate used.



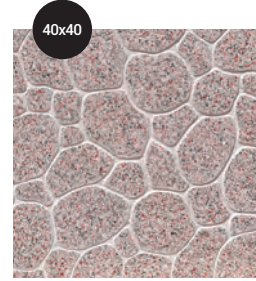
1802 artificial



1804 artificial



1808 artificial



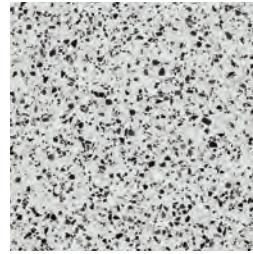
1808 artificial (marble)



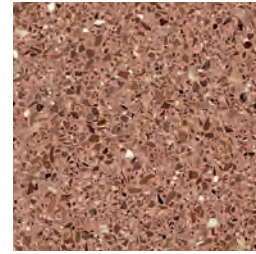
1810 artificial



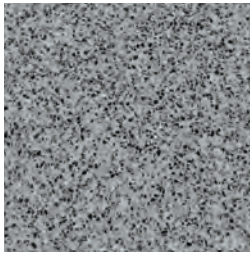
1813 artificial



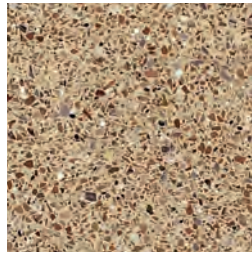
1812 artificial



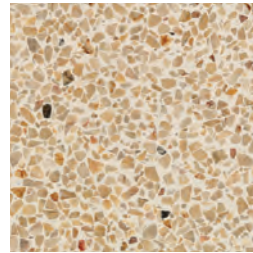
1820 artificial



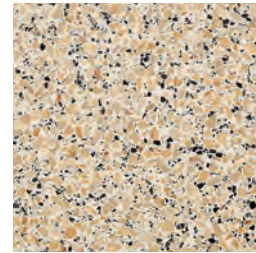
1825 artificial



1834 artificial



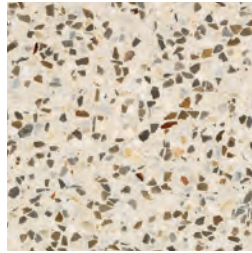
1839 artificial



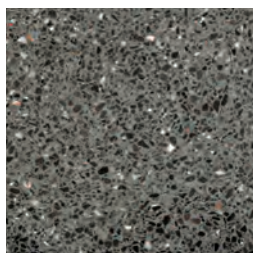
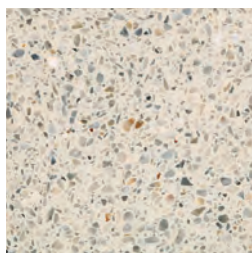
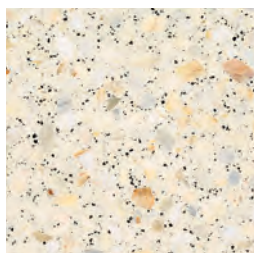
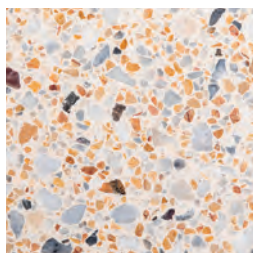
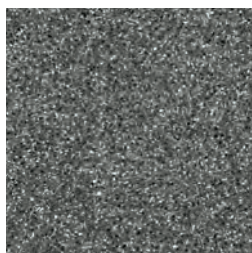
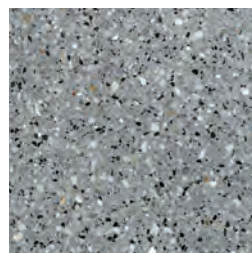
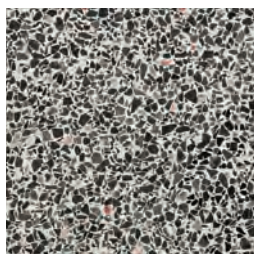
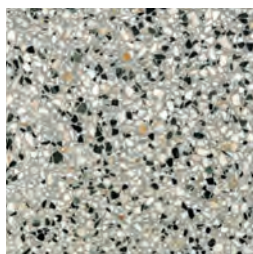
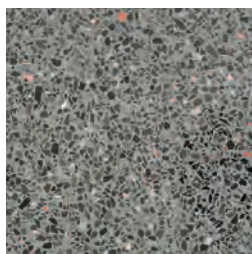
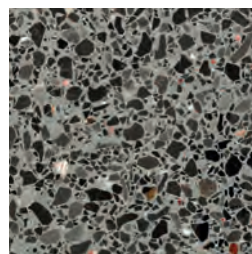
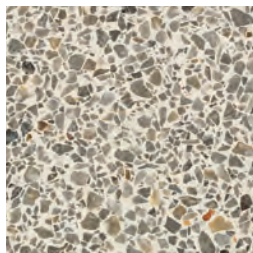
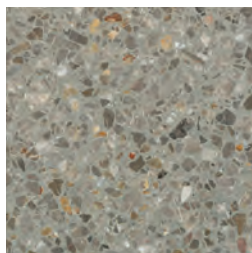
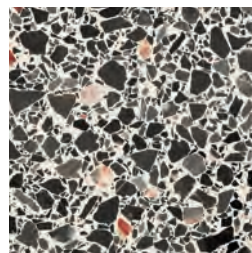
1840 artificial

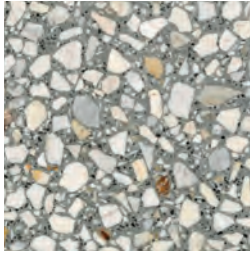


1848 artificial

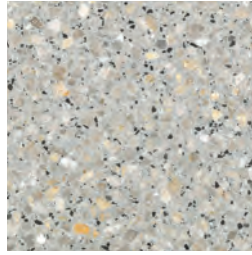


1853 artificial

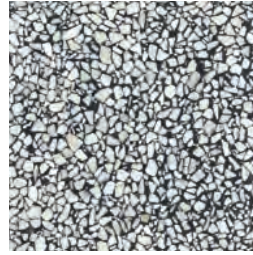
**1854** artificial marble**1860** artificial marble**1862** artificial marble**1874** artificial marble**1875** artificial marble**1884** artificial marble**1889** artificial marble**1912** artificial marble**1913** artificial marble**1914** artificial marble**1917** artificial marble**1918** artificial marble**1919** artificial marble**1921** artificial marble**1922** artificial marble**1923** artificial marble



1924 artificial marble



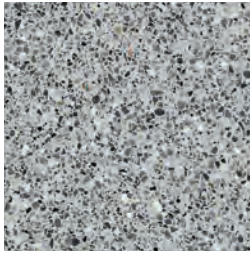
1930 artificial marble



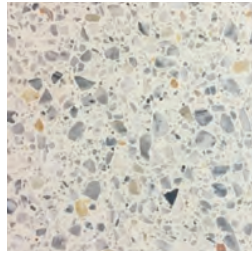
1931 artificial marble



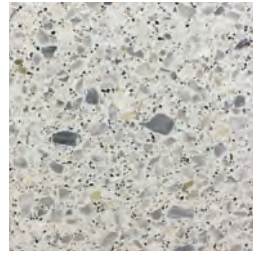
1934 artificial marble



1938 artificial marble



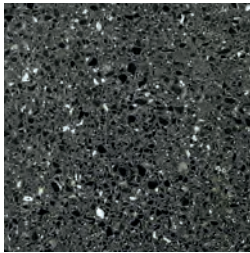
1941 artificial marble



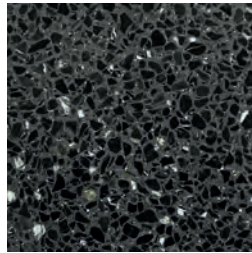
1942 artificial marble



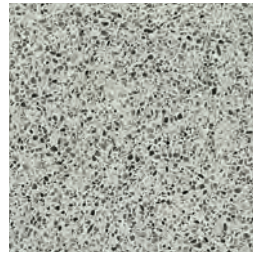
1950 artificial marble



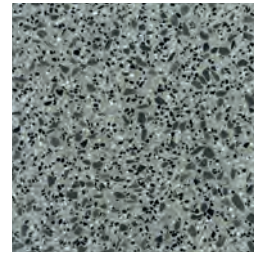
1968 artificial marble



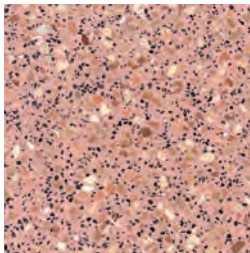
1973 artificial marble



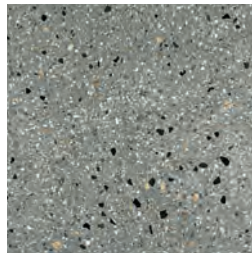
1974 artificial marble



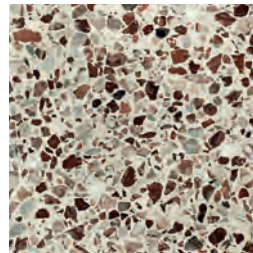
1982 artificial marble



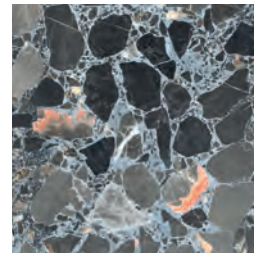
1983 artificial marble



1984 artificial marble



1991 artificial marble



artificial marble

TERRAZZO

ARTIFICIAL MARBLE COLLECTION

These products have properties arising from the natural structure of the aggregate used.

Technical Specifications

Terrazzos produced by using selected natural stones are aesthetic, durable, effortless products that are easy to maintain. It is resistant to abrasion and impacts and has high tensile strength in bending. Terrazo tiles are preferred products for different purposes and places used on indoor floors, terraces and outdoor spaces.

A higher compressive strength value than with Single Layer terrazzos and conventional terrazzos can be achieved by applying vacuum. Since they are thinner and lighter, transportation costs are reduced by half, and they provide a great advantage in labor and assembly costs.

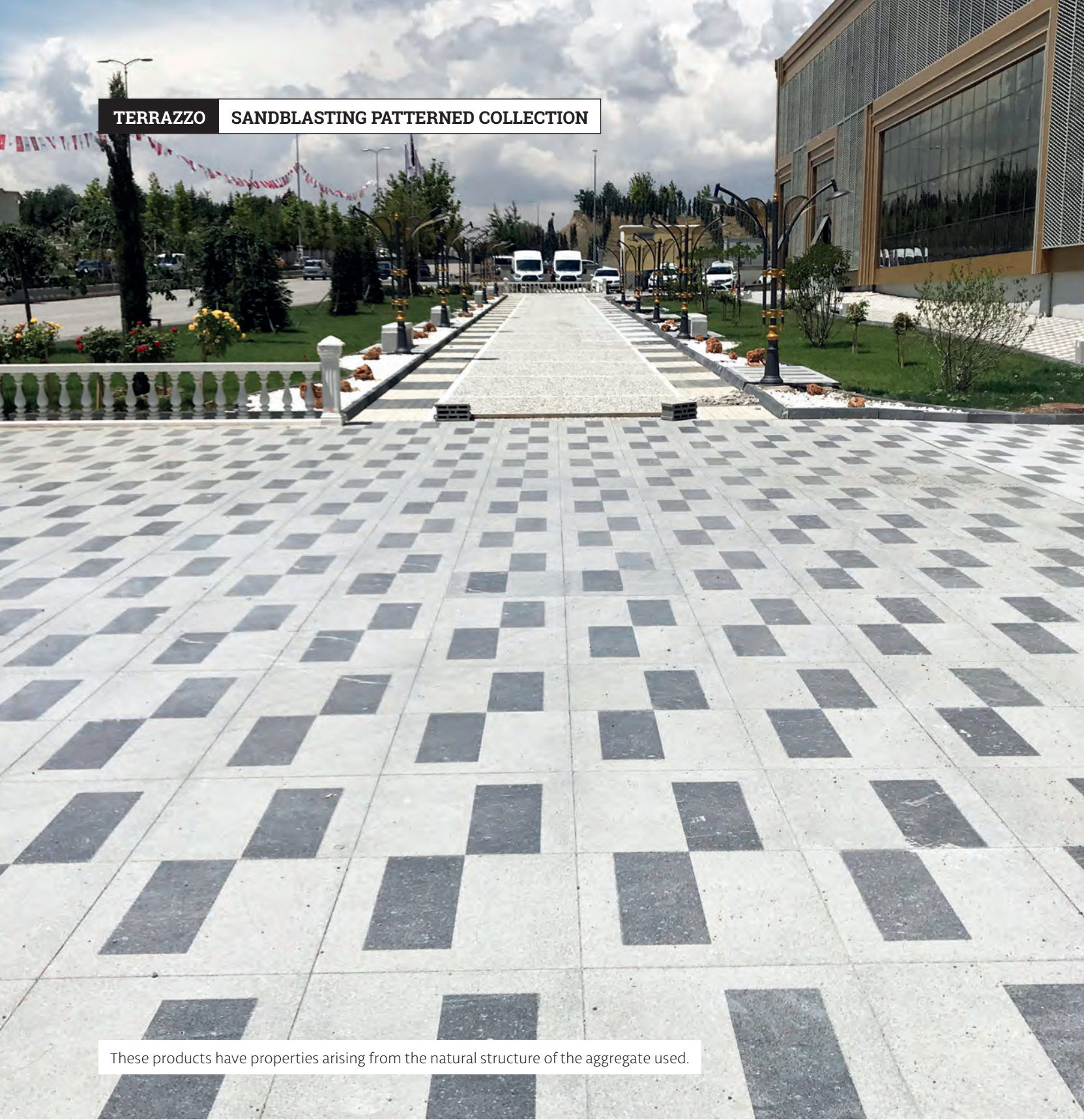
Sandblasting, Patinato and Polishing application of this product, as well as Precast production in different geometric sizes can be made optionally.

Packaging Information		33x33 cm	29.7x60 cm	40x40 cm	40x40 cm	60x60 cm	60x60 cm	40x80 cm
SINGLE-LAYER TERRAZZO	Thickness	2 cm	3 cm	2 cm	2.5 cm	2.5 cm	3 cm	3 cm
	Pcs /m²	9 Pcs	5.54 Pcs	6.25 Pcs	6.25 Pcs	2.77 Pcs	2.77 Pcs	3.125 Pcs
	Kg / m²	45 Kg	72 Kg	48 Kg	61.56 Kg	59.80 Kg	72 Kg	72 Kg
	m² / Pallet	44 m ²	18 m ²	44.8 m ²	37.44 m ²	18 m ²	18 m ²	17.92 m ²
	Kg / Pallet	1980 kg	1296 Kg	2150 Kg	2305 Kg	1045 Kg	1296 Kg	1290 Kg

Packaging Information		30x30 cm	30x30 cm	40x40 cm	40x40 cm	40x40 cm	40x60 cm	50x50 cm	30x60 cm
TWO-LAYER TERRAZZO	Thickness	2.5 cm	3 cm	3.2 cm	3.7 cm	6 cm	3.5 cm	4.5 cm	5.5 cm
	Pcs /m²	11.11 Pcs	11.11 Pcs	6.25 Pcs	6.25 Pcs	6.25 Pcs	4.17 Pcs	4 Pcs	5.55 Pcs
	Kg / m²	60 Kg	70 Kg	76.80 Kg	88.80 Kg	137.5 Kg	84 Kg	108 Kg	146 Kg
	m² / Pallet	34 m ²	30.8 m ²	23 m ²	19.8 m ²	14.4 m ²	24 m ²	20 m ²	14.4 m ²
	Kg / Pallet	2041 Kg	2216 Kg	1774 Kg	1686 Kg	1980 Kg	2016 Kg	2160 Kg	2050 Kg

The data may vary according to the pallet dimensions. Average values are given.

Pallet data may change. Please get information for the current pallet data.



These products have properties arising from the natural structure of the aggregate used.

Sandblasting Patterned Terrazzo Collection

It is resistant to abrasion and impact.
The lubricity values are lower than standard terrazzo.
The pattern expands the alternative.
It adds a separate value to the places.

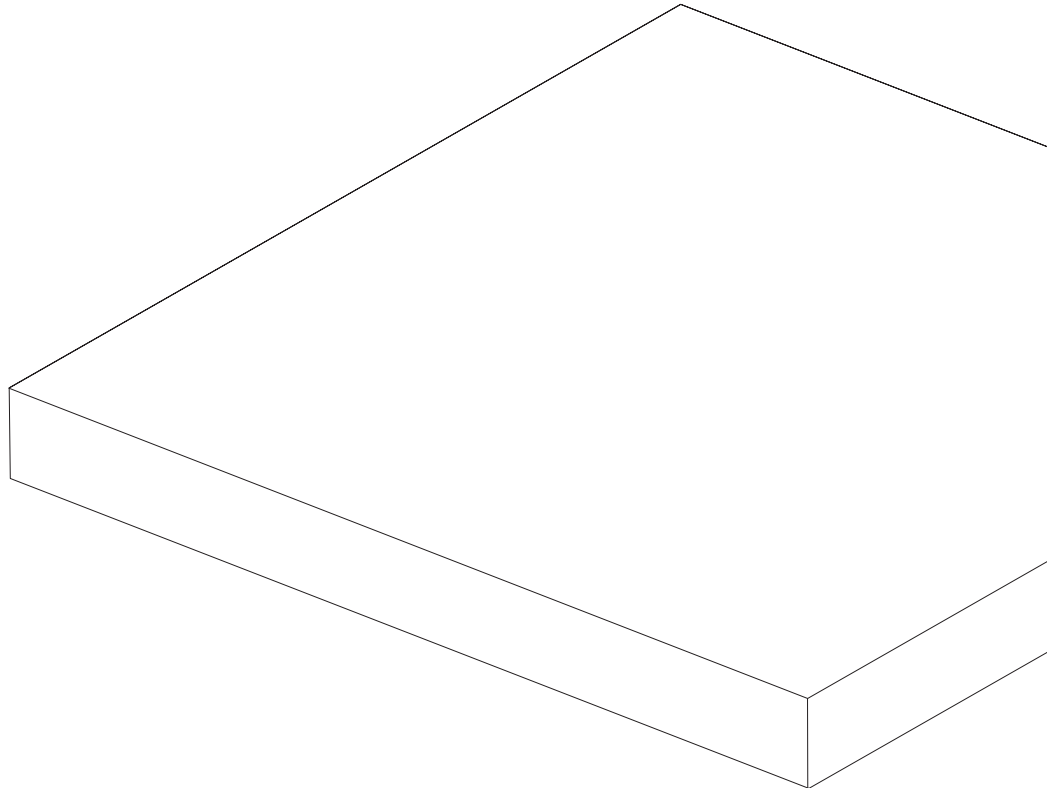


Sandblasting Patterned Terrazzo Collection

Sandblasting application is a special top surface treatment applied to the terrazzo surface. For this reason, terrazzo with sandblasting pattern is both aesthetically and technically special products. The most important feature of the sandblasted surface is that it is not slippery. The smooth terrazzo surface and the blasted surface lubricity balance each other, and the glossy texture of the terrazzo gains a more remarkable appearance on the matte sandblasting pattern.

Sandblasting patterns can be applied on each of our single-layer or two-layer models you choose from our Terrazzo collection.

In order to get both aesthetic and useful floors, let's first choose a model from our wide terrazzo collection. Then let's like one of the sandblasting patterns and design special products for you. Every place has a soul and a story. Let's be a part of the story.



These products have properties arising from the natural structure of the aggregate used.

All Sandblasting Pattern

It is one of the indispensable solutions in terms of aesthetics and functionality in outdoor areas.

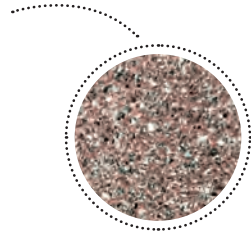
30x30 cm

40x40 cm

40x60 cm

40x80 cm

60x60 cm

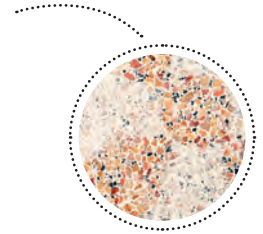
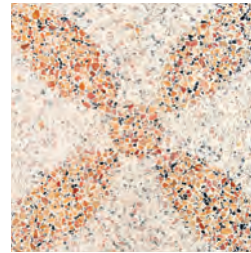


1851 all sandblasting

Daisy Pattern

Daisy Pattern, which takes on a different style according to the Terrazzo model it is applied to, is the perfect choice for stylish spaces away from the ordinary.

30x30 cm



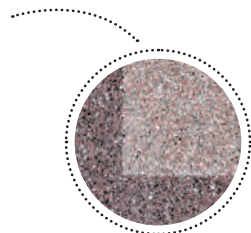
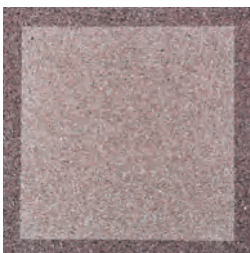
1840 daisy pattern

Frame Pattern

Among the sandblasting patterns, our model in which the sandblasting process is used most intensively is the Frame Pattern. For this reason, it is our most matte and lowest slippery pattern. The contrast between the glossy surface of the terrazzo frame and the matte surface will add depth to your spaces.

30x30 cm

40x40 cm

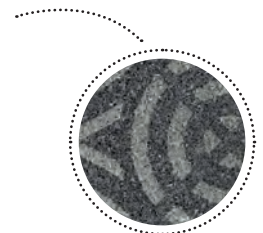


1851 frame pattern

Space Pattern

Space Pattern, our most lively sandblasting pattern, enlivens any space. It is mostly preferred in Terrazzos in pink and black tones, and by using contrasting colors together, it creates striking and assertive spaces.

40x40 cm



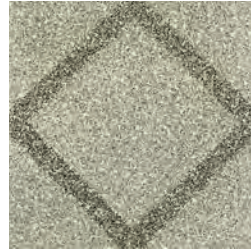
1860 space pattern

Diamond Pattern

Among the sandblasting patterns, our model in which the sandblasting process is mostly used is the Frame Pattern. For this reason, our pattern is the most matte and the slipperiness level is the lowest. The contrast between the glossy surface of the terrazzo frame and the matte surface will add depth to your spaces.

30x30 cm

40x40 cm



1813 lozenged pattern

Pyramid Pattern

It is the perfect solution to carry the terrazzos to be used in the spaces to different sizes and to add depth to your space.

40x40 cm

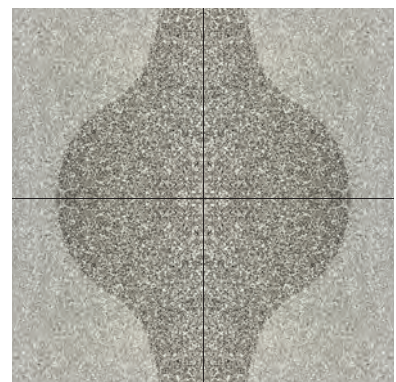


1860 pyramid pattern

Water Pattern

The Water Pattern, which creates beautiful patterns according to the way of application, definitely creates remarkable and different spaces. Sandblasting applied to half of the terrazzo surface adds both movement and depth to the water pattern. Highly recommended for those who want to use their creativity to the fullest.

40x40 cm



1813 water pattern

Wave Pattern

The newest member of the sandblasting pattern series, the Wave pattern creates a different visual effect by adding a sense of depth to the spaces where it is used.

50x50 cm



1860 wave pattern



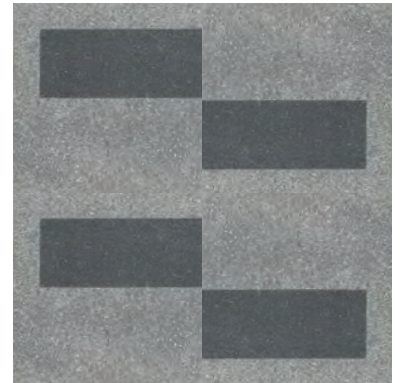
Piano Pattern

The Wave pattern, the newest member of the sandblasting pattern series, creates a different visual effect by adding a sense of depth to the spaces where it is used.

60x60 cm



1860 piano pattern



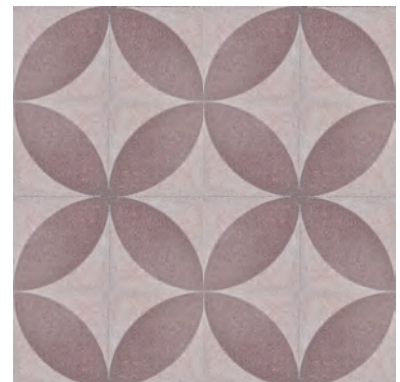
Star Pattern

Our newest model, which is designed to be used in large and spacious areas. It produces perfect solutions to add depth to your spaces.

60x60 cm



1851 star pattern



TERRAZZO PRECAST

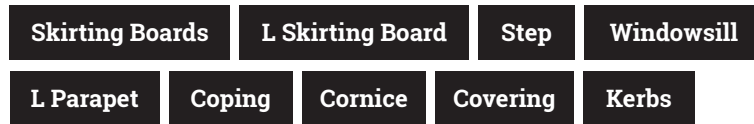
ELEMENTS



Terrazzo Precast Elements

Steps, windowsills, L parapets, copings, skirting boards, cornices, kerbs and facing work products are specially produced for you, according to your needs, for harmonious spaces that complement our flooring collection.

Complementary products are available for every model in our Terrazzo collection. If you want, use complementary products of tile models that you use for floor covering, and combine contrasting models. Consult our expert team and we will help you with dimensioning and implementation issues.



SOME TECHNICAL CHARACTERISTICS COMPARED WITH TSE STANDARDS		
TS EN 14843 PRE-CAST CONCRETE PRODUCTS (STAIRS)	STANDARD VALUES	STAIRS
TENSILE STRENGTH AT PRESSURE	Average C 30/37	48 (Mpa)
REINFORCING STEEL TENSILE STRENGTH	Minimum 600 N / mm ²	740 N/mm ²
REINFORCEMENT STEEL YIELD STRENGTH	Minimum 550 N / mm ²	669 N/mm ²
LOAD CAPACITY/ CONDITION	Minimum 150 KN / m ²	153 - 332 KN / m ²
m ² % OF WATER ABSORPTION	Average 6%	5,8 (%)















TERRAZZO PRECAST

ELEMENTS

These products have properties arising from the natural structure of the aggregate used.

TERRAZZO PRECAST ELEMENT PRODUCTS












Plate Type Step 	L Type Step 	Belt Sandblasting L Step 	L Step With Anti-Slip Double Strip Rubber 
L Step With Anti-Slip Single Strip Rubber 	Non-Slip Wide Rubber L Step 	L Parapet 	L Skirting 
Travertine Pattern Plate Step 	Rotating Plate Step 	Windowsill and Facing Work 	Skirting 

Products whose size is not specified, the size is not written because it is not standard.
Production is carried out according to the specified dimensions



These products have properties arising from the natural structure of the aggregate used.

TERRAZZO PRECAST ELEMENT PRODUCTS

U Coping 	Cornice 	Facing Works 10x40 cm 	Precast Groove Length: 1.00 H: 11 Width: 30 60 kg Pcs 
Precast Kerb Length: 1.00 H: 20 Width: 14 62 kg Pcs 	Precast Kerb Width: 10 Height: 50 H: 20 Weight: 22 kg 	Double Chamfered Precast Border Width: 14 Length: 1.00 H: 20 Pcs Weight: 62 kg 	Precast Kerb Width: 8 Height: 60 H: 10 Weight: 11 kg 
Precast Border Width: 10 Length: 50 	Precast Border Width: 15 Length: 70 H: 25 Weight: 57 kg 	Facing Work 20x40 cm 	

Products whose size is not specified, the size is not written because it is not standard. Production is carried out according to the specified dimensions.

WASCH CONCRETE

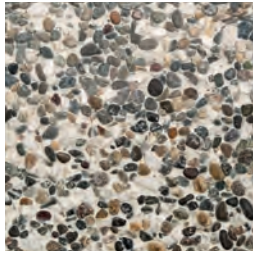
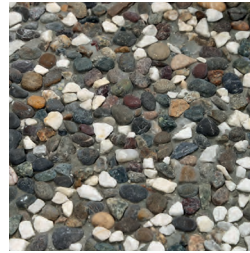
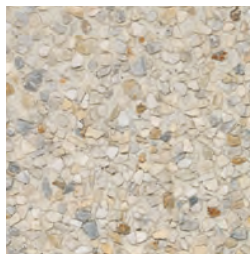
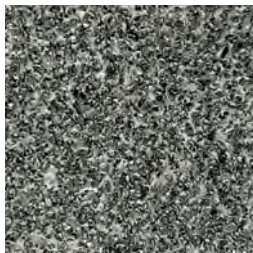
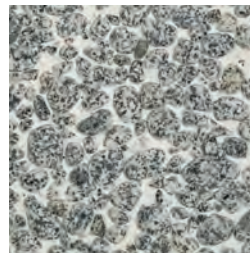
PRODUCTS



Wash Concrete Products

Wash Concrete Products is a type of concrete produced with natural stream pebbles or rounded colored mosaic stones. Wash Concrete Products are used in places open to light vehicle traffic, parks-gardens, walking paths, buildings. It is widely used as flooring, stair step and facade cladding from entrances.

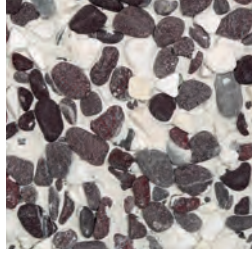


**1338** wasch concrete**1339** wasch concrete**1342** wasch concrete**1346** wasch concrete**1349** wasch concrete**1368** wasch concrete**1371** wasch concrete**1372** wasch concrete**1373** wasch concrete

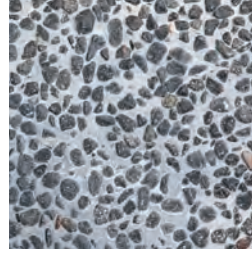
Wasch Concrete Products are produced by special washing method by using selected natural aggregates different from other products.



1375 wasch concrete



1376 wasch concrete



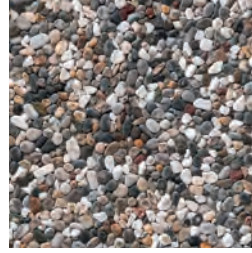
1378 wasch concrete



1382 wasch concrete



1384 wasch concrete



1385 wasch concrete

Wasch Concrete Products are produced by special washing method by using selected natural aggregates different from other products.



WASCH CONCRETE

PRODUCTS

These products have properties arising from the natural structure of the aggregate used.

WASCH CONCRETE PRECAST PRODUCTS

Wasch Concrete Slab Step



Wasch Concrete L Step



Wasch Concrete L Parapet



Wasch Concrete Windowsill



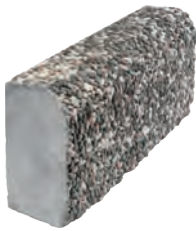
Wasch Concrete Cornice



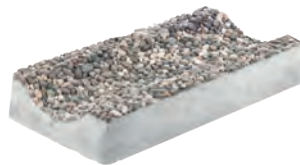
Wasch Concrete Facing Work



Wasch Concrete Kerb



Wasch Concrete Rainwater Gutter



Wasch Concrete Cork



Wasch Concrete Flower Bed



Wasch Concrete Dustbin



Wasch Concrete Cigarette Holder



CONCRETE CEILING

PAVING STONES



Pavement Concrete Paving Stones

Concrete Paving Stones, also known as Paving Stones, are indispensable floor covering materials for outdoor spaces due to their aesthetic, durability and longevity.

Our ceiling models, which are produced in sizes of 30x30 cm and 40x40 cm, liberate outdoor spaces from their ordinary appearance and transform them into aesthetic and stylish mechanics.

It is possible to create different patterns with different combinations of patterns. It will add an eye-catching atmosphere to our outdoor spaces by using White, Pink, Yellow, Gray and Red tones.

SOME TECHNICAL CHARACTERISTICS COMPARED WITH TSE STANDARDS

TS 213-2 EN 13748-2 TERRAZO TILES (OUTER SPACE)	STANDARD VALUES	TERRAZO TILES (OUTER SPACE)
TENSILE STRENGTH IN BENDING	Average 3,5 / 4,0 / 5,0 Mpa	5,4 Mpa
WEAR RESISTANCE	Average 20 / 23 / 26 mm	20 mm
% OF WATER ABSORPTION	Average 6 %	5,9 %
% OF FROST RESISTANCE	Average 1 %	0,15 %

Packaging Information

		30x30 cm	30x30 cm	40x40 cm	40x40 cm	40x40 cm
PAVEMENT	Thickness	3 cm	3 cm	3.5 cm	3.5 cm	3.7 cm
	Pcs / m²	11.11 Pcs	11.11 Pcs	6.25 Pcs	6.25 Pcs	6.25 Pcs
	Kg / m²	68 Kg	70 Kg	85 Kg	85 Kg	90 Kg
	m² / Pallet	29 m ²	31 m ²	19.2 m ²	18.56 m ²	17.92 m ²
	Kg / Pallet	1982 Kg	2170 Kg	1632 Kg	1577 Kg	1610 Kg
	Pcs / Pallet	324 Pcs	342 Pcs	120 Pcs	116 Pcs	112 Pcs

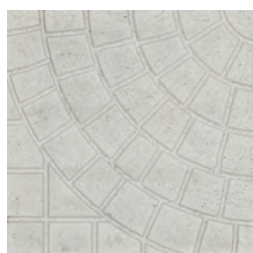
* 30x30 trottoirs are packed as 324 pieces.

* Only 2410 of our Travertine trottoirs are packed in 342 pieces.

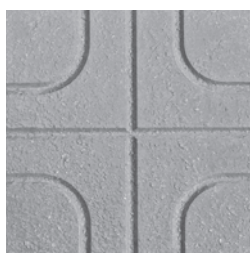
* 40x40 trottoirs are packed in 120 pieces and 116 pieces.

Pallet data may change. Please get information for the current pallet data.

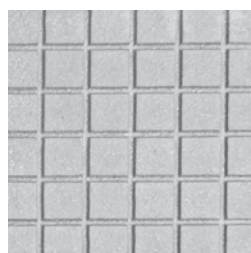
Trottoir Concrete 30x30 cm Collection



2402 relief



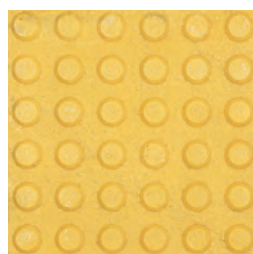
2403 intersection



2405 square



2410 travertine



2422 visually impaired direction



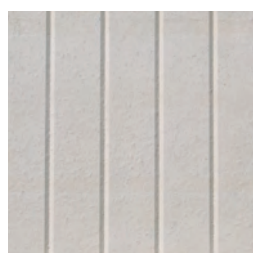
2423 visually impaired follow-up



2426 plates



2427 flowers



2428 straight line

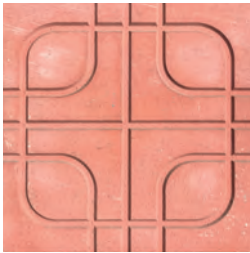


2429 island



2413 striped relief

These products have properties arising from the natural structure of the color pigments used.



2403 intersection



2404 castle



2406 line travertine



2407 spider



2409 honeycomb



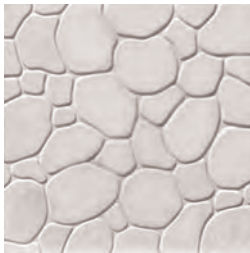
2410 travertine



2412 relief



2413 striped relief



2420 drop



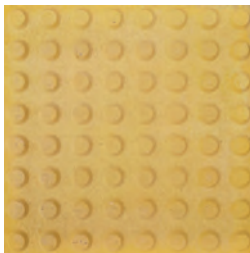
2424 rectangle



2425 checkers



2430 wood



2242 visually impaired



2423 visually impaired follow-up



1860 motive pattern



1860 motive pattern

These products have properties arising from the natural structure of the color pigments used.

LOCKED CONCRETE

PAVING STONES



Locked Concrete Paving Stones

Concrete paving stones offer design possibilities that are not found in any other floor covering material with its rich pattern, different colors and variety of applications. For this reason, concrete locked paving stones are the most preferred floor covering material in outdoor areas.

Concrete paving stones add a distinct beauty to every place from a small garden to large parks, sidewalks to squares, parking lots to main roads. While recreating spaces, they defy time and the corrosive effects of nature. They are products that are resistant to all kinds of weather conditions in four seasons. There are no freezing and slipperiness problems.

There are three different height alternatives available in concrete locked parquet models, 6 cm, 8 cm and 10 cm. The thickness of the parquet should be determined according to the place and floor to be applied.



6 cm concrete locked paving stones is used in parking and garden landscaping, pedestrian and walking paths and smooth floors.



8 cm concrete locked paving stones, on the other hand, are used on damaged floors where light vehicle traffic is experienced.






10 cm concrete locked paving stones are used in industrial zones.

Aşık Stone (3101)

Aşık Stone (also known as I taşı) is the most preferred locked parquet model in our country. With corner structures that completely fix each other, it can be used for many years in very different places without compromising its durability and aesthetics. It can be used on roads with heavy vehicle traffic, as well as it is one of the indispensable models in sidewalk corners, parking lots, garden and park landscaping. Our Aşık Stone model, which is produced in three different thicknesses as 6 cm, 8 cm and 10 cm, is also manufactured in different colors.





	16.5x20 cm	Pcs / m ²	Kg / m ²	m ² / Pallet	Kg / Pallet
	H=6 cm	35 Pcs	125 Kg	16.46 m ²	2058 Kg
	H=8 cm	35 Pcs	167 Kg	12.35 m ²	2063 Kg
	H=10 cm	35 Pcs	207 Kg	10.28 m ²	2128 Kg

Ellipse Stone (3102)

Ellipse Stone, which is one of the most stylish locked parquet models, adds aesthetics to both paving slabs and parking lot arrangements. With its wide wavy pattern structure, it is also effective as a boundary setter and router in garden, road and sidewalk arrangements. Ellipse Stone, which you can create many different and lively spaces with different color alternatives and flooring applications, is produced in two different thicknesses, 6 cm and 8 cm.



	24.2x26 cm	Pcs / m ²	Kg / m ²	m ² / Pallet	Kg / Pallet
	H=6 cm	26 Pcs	140 Kg	16.6 m ²	2324 Kg
	H=8 cm	26 Pcs	188 Kg	12.5 m ²	2353 Kg



These products carry the properties arising from the structure of the color pigments used.

Pallet data may change. Please get information for the current pallet data.

S-Stone (3103)

S stone, one of the most preferred locked parquet models, provides excellent sealing with its intensive wavy corner structure and maintains its durability for many years even in areas with heavy vehicle traffic. S-Stone, which also creates special spaces for you with different application designs in garden and park landscaping, is produced in 6 cm and 8 cm thicknesses. Our model is also manufactured in different colors.





	12.5x23 cm	Pcs / m ²	Kg / m ²	m ² / Pallet	Kg / Pallet
	H=6 cm	40 Pcs	135 Kg	16 m ²	2160 Kg
	H=8 cm	40 Pcs	180 Kg	12 m ²	2160 Kg

Diamond (3104)

Our three-dimensional locked parquet model is one of our most dynamic models. This pattern, which looks like a cube at first glance, gives the image of a six-petaled flower from a different perspective. With this feature, the three-dimensional locked parquet model promises you stunning and amazing spaces. Our three-dimensional locked parquet model, which is preferred in gardens and especially in park/square landscaping, and also in parking lots, our 6 cm and 8 cm thick models are also produced in different colors.



	19.1x33.1 cm	Pcs / m ²	Kg / m ²	m ² / Pallet	Kg / Pallet
	H=6 cm	27.5 Pcs	130 Kg	16 m ²	2080 Kg
	H=8 cm	27.5 Pcs	170 Kg	12 m ²	2040 Kg


These products carry the properties arising from the structure of the color pigments used.

Pallet data may change. Please get information for the current pallet data.



Octagon (3105)


Our octagonal locked parquet model, which is produced with a size of 24x24 cm and a thickness of 8 cm, is one of the most classic models. It offers color alternatives both together with the cube stone and alone.

	24x24 cm	Pcs / m ²	Kg / m ²	m ² / Pallet	Kg / Pallet
	H=8 cm	17 Pcs	145 Kg	14.1 m ²	2044 Kg



Cube Stone (3106)

Cube Stone is our smallest size parquet model. Especially with octagonal and rectangular models, it is possible to create very colorful and very lively spaces.

	10x10 cm	Pcs / m ²	Kg / m ²	m ² / Pallet	Kg / Pallet
	H=8 cm	100 Pcs	170 Kg	11.88 m ²	2020 Kg




These products carry the properties arising from the structure of the color pigments used.

Pallet data may change. Please get information for the current pallet data.

Lamp (3107)

In addition to its plain and simple appearance, our lamp model locked parquet is one of our most functional models. It is preferred to be used in determining road boundaries and directions, in sloping terrain, ramps and garage entrances, as well as pavement and parking areas.





	14x23 cm	Pcs / m ²	Kg / m ²	m ² / Pallet	Kg / Pallet
	H=8 cm	38 Pcs	174 Kg	12.63 m ²	2192 Kg



Square (3108)

Square parquet is one of the oldest known locked parquet models. Our square locked parquets, which are produced in Large Square (40x40cm) and Small Square (20x20 cm) sizes with a thickness of 8 cm, create elegant and stylish gardens, relaxing walkways and sidewalks with their classic lines.




	40x40 cm	Pcs / m ²	Kg / m ²	m ² / Pallet	Kg / Pallet
	H=6 cm	6.25 Pcs	129 Kg	11.52 m ²	1486 Kg
	20x20 cm	Pcs / m ²	Kg / m ²	m ² / Pallet	Kg / Pallet
	H=8 cm	25 Pcs	175 Kg	14.4 m ²	2520 Kg



Square Rectangle (3109)

Our square rectangular parquet model is one of the oldest known models. It is produced in large square (30x30 cm) and rectangular (30x20 cm) sizes with a thickness of 8 cm. It adds richness and spaciousness to the environment in which it is applied and it can be applied outside of what it is used to.



	30x30 cm 30x20 cm	Pcs / m ²	Kg / m ²	m ² / Pallet	Kg / Pallet
	H=8 cm	11.11 Pcs 16.6 Pcs	176 Kg	14.4 m ²	2534 Kg





These products carry the properties arising from the structure of the color pigments used.

Pallet data may change. Please get information for the current pallet data.



Rectangle (3110)

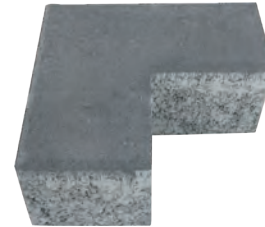
Rectangular parquets are one of the oldest known interlocking parquet models. Large Rectangle (20x30cm) is produced with a thickness of 8 cm and Small Rectangle is produced (10x20 cm) with a thickness of 8 cm and 6 cm.


	10x20 cm	Pcs / m ²	Kg / m ²	m ² / Pallet	Kg / Pallet
	H=6 cm	50 Pcs	130 Kg	17.28 m ²	2246 Kg
	H=8 cm	50 Pcs	170 Kg	12.96 m ²	2203 Kg



L-Stone (3113)

The L-Stone, which is produced in 8 cm thickness, resembles an L with the dimensions of 20x20 cm, as its name suggests. Different flooring applications can be made alone or it is possible to create patterns that complement each other together with the Cube Stone. It adds different angles to different spaces with white, pink, yellow, gray and red color alternatives.




	20x20 cm	Pcs / m ²	Kg / m ²	m ² / Pallet	Kg / Pallet
	H=8 cm	36 Pcs	185 Kg	12 m ²	2220 Kg



Antique (3114)

One of the most distinguished models of our locked parquet collection, Antik is elegant as if it were made by a sculptor. It is possible to create wonderful patterns with the perfect harmony of three separate shapes that are compatible with each other.



	11.5x8.5 cm 11.5x8 cm 12x5.5 cm	Pcs / m ²	Kg / m ²	m ² / Pallet	Kg / Pallet
	H=8 cm	84 Pcs	170 Kg	12 m ²	2040 Kg



These products carry the properties arising from the structure of the color pigments used.

Pallet data may change. Please get information for the current pallet data.

Rectangle (3123)

The newest member of our rectangular models. It is one of the perfect solutions that gives depth to your outdoor spaces.



This image has a sandblasting surface.

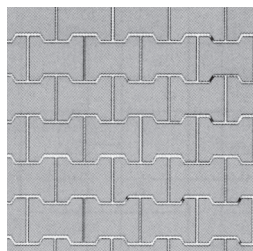
	40x60 cm	Pcs / m ²	Kg / m ²	m ² / Pallet	Kg / Pallet
	H=8 cm	4.16 Pcs	203.84 Kg	11.5 m ²	2344 Kg



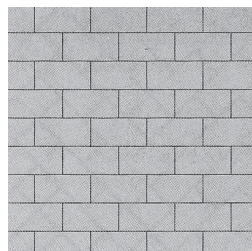
These products carry the properties arising from the structure of the color pigments used.

Pallet data may change. Please get information for the current pallet data.

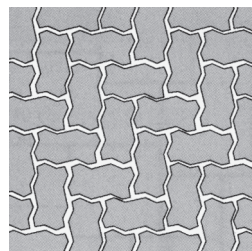




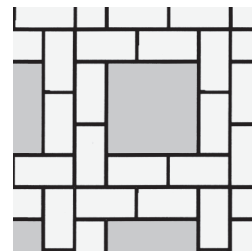
Aşık Stone



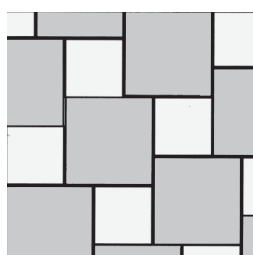
Rectangle 10x20 cm



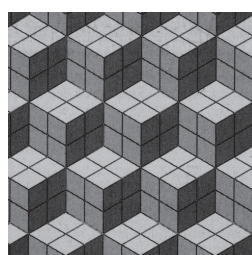
S Stone



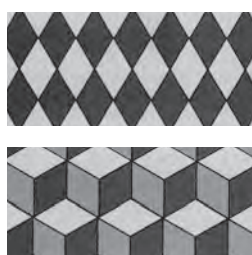
Square Rectangle
30x30 cm - 20x30 cm



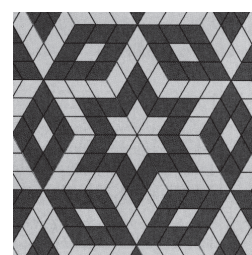
Square
40x40 cm - 20x20 cm



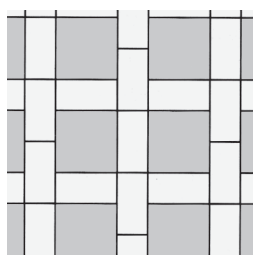
Diamond



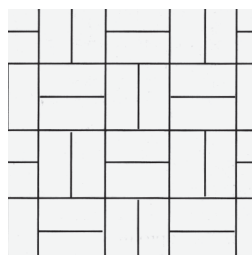
Diamond



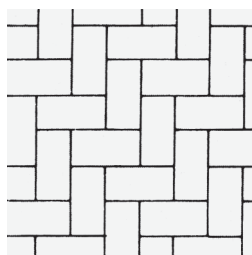
Diamond



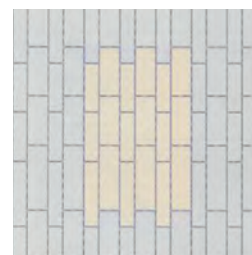
Rectangle
10x20 cm - 20x20 cm



Rectangle 10x20 cm



Rectangle 10x20 cm



Beganite Rectangle
50x16 cm - 11,5 cm
37,5x16 cm - 37,5x11,5 cm

SOME TECHNICAL CHARACTERISTICS COMPARED WITH TSE STANDARDS

TS 2824 EN 1338 CONCRETE FACING BLOCK STONES	STANDARD VALUES	LOCKED CONCRETE PAVING STONES
TENSILE STRENGTH IN SPLITTING	Average 3,6 Mpa	3,9 Mpa
WEAR RESISTANCE	Average 20 / 23 mm	18 mm
% OF WATER ABSORPTION	Average 6 %	5,6 %
% OF FROST RESISTANCE	Average 1 %	0,15 %

These products have properties arising from the natural structure of the aggregate used.



LOCKED CONCRETE PAVING STONES





BEGANITE

PRODUCTS

SOME TECHNICAL CHARACTERISTICS COMPARED WITH TSE STANDARDS

TS 436 EN 1340 CONCRETE KERB STONES	STANDARD VALUES	OUR KERB STONES
TENSILE STRENGTH IN BENDING	Average $\geq 3,5 / 5,0 / 6,0$ Mpa	4,1 / 5,3 / 6,4 Mpa
WEAR RESISTANCE	Average $\leq 20 / 23$ mm	18 mm
% OF WATER ABSORPTION	Average ≤ 6 %	5,6 %
% OF FROST RESISTANCE	Average ≤ 1 %	0,14 %



Beganite Kerb (3351)

It is a beganit kerb model with a thickness of 50x20x10 cm, designed to be used in garden and park landscaping.



Our beganite kerb model is also produced with granite aggregate, quartz aggregate, basalt aggregate and sandblasting surface. These products carry the properties arising from the structure of the color pigments used.

Beganite Paving Stone

You can restore the historical texture with beganite paving stone. It is an alternative to natural granite stones with 7 different sizes. The surface, which is paved with stones of different surface shapes and sizes, is striking in harmony with its natural structure.

SOME TECHNICAL CHARACTERISTICS COMPARED WITH TSE STANDARDS

TS 2824 EN 1338 CONCRETE FACING BLOCK STONES	STANDARD VALUES	LOCKED CONCRETE PAVING STONES
TENSILE STRENGTH IN SPLITTING	Average 3,6 Mpa	3,9 Mpa
WEAR RESISTANCE	Average 20 / 23 mm	18 mm
% OF WATER ABSORPTION	Average 6 %	5,6 %
% OF FROST RESISTANCE	Average 1 %	0,15 %



BEGANITE


PAVING STONE

These products have properties arising from the natural structure of the aggregate used.



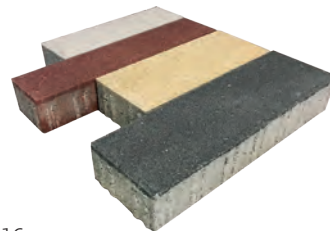
Beganite Cube (3301)

Beganite cube stones consist of seven different sizes. The product is designed to add richness and aesthetics to the place where it is applied.

	Pcs / m ²	Kg / m ²	m ² / Pallet	Kg / Pallet
 H=8 cm	84 Pcs	170 Kg	12 m ²	2040 Kg




Our Beganit flooring models are also manufactured with granite aggregate, quartz aggregate, basalt aggregate and sandblasting surface.



Beganite Rectangle (3302)

Beganite rectangular stones consist of four different sizes. The product is designed to add richness and aesthetics to the place where it is applied.

	Pcs / m ²	Kg / m ²	m ² / Pallet	Kg / Pallet
50x16 cm 50x11,5 cm 37,5x16 cm 37,5x11,5 cm				
 H=8 cm	18 Pcs	183,5 Kg	12 m ²	2200 Kg





Our Beganit flooring models are also manufactured with granite aggregate, quartz aggregate, basalt aggregate and sandblasting surface.

Beganite Rectangle (3303-B) (3305-B)

Beganite rectangular stones consist of a thickness of 8 cm and 6 cm. The product is designed to add richness and aesthetics to the place where it is applied.



	Pcs / m ²	Kg / m ²	m ² / Pallet	Kg / Pallet
10x20 cm				
 H=6 cm	50 Pcs	130 Kg	17.28 m ²	2246 Kg
 H=8 cm	50 Pcs	170 Kg	12.96 m ²	2203 Kg



Our Beganit flooring models are also manufactured with granite aggregate, quartz aggregate, basalt aggregate and sandblasting surface.

These products carry the properties arising from the structure of the color pigments used. **Pallet data may change. Please get information for the current pallet data.**

CONCRETE

KERB STONES



Concrete Kerb Stones

Kerbs, one of the most important elements of environmental and road landscaping, are manufactured in different sizes according to their useful place and purpose. Concrete kerb stones with red and gray color alternatives can also be produced in the desired colors in special productions.

SOME TECHNICAL CHARACTERISTICS COMPARED WITH TSE STANDARDS

TS 436 EN 1340 CONCRETE KERB STONES	STANDARD VALUES	OUR KERB STONES
TENSILE STRENGTH IN BENDING	Average \geq 3,5 / 5,0 / 6,0 Mpa	4,1 / 5,3 / 6,4 Mpa
WEAR RESISTANCE	Average \leq 20 / 23 mm	18 mm
% OF WATER ABSORPTION	Average \leq 6 %	5,6 %
% OF FROST RESISTANCE	Average \leq 1 %	0,14 %

Standard Kerb

In other words, Municipal Kerbs are kerbs designed to be laid between the road and the sidewalk, produced in Thin (70x30x15 cm) and Long-TCK (75x30x15cm) sizes according to your preference.

4102 65.40 Kg

70x30x15 cm

4108 69 Kg

75x30x15 cm



Garden Kerb

In other words, Municipal Kerbs are kerbs designed to be laid between the road and the sidewalk, produced in Thin (70x30x15 cm) and Long-TCK (75x30x15cm) sizes according to your preference.

4104 19.85 Kg

50x20x10 cm



Mortise Garden Border

It is a kerb model in sizes of 50x20x10 cm designed to be used in garden and park landscaping, with an interlocking system.

4124 19.70 Kg

50x20x10 cm



Refuge Kerb

It is a kerb in sizes of 50x25x20 cm, designed to surround and separate the landscaping applied between two roads on highways.

4106 52.30 Kg

50x25x20 cm



The weights indicated are the average piece weights. Weights may vary depending on the heat and humidity conditions.

Highways Kerb

It is manufactured according to highway standards and designed for use on highways.

4101 70.30 Kg

70x30x18 cm

4126 59.25 Kg

50x30x18 cm



Mortise Highways Kerb

It is manufactured according to highway standards and designed for use on highways.

4108 71 Kg

75x30x15 cm



Recumbent Kerb

In other words, "Andesite Type" border, 50x30x15cm is a recumbent kerb model that is produced as an alternative to the standard kerb.

4105 46.80 Kg

50x30x15 cm



Mortise Recumbent Kerb

In other words, "Andesite Type" border, 50x30x15cm is a recumbent kerb model that is produced as an alternative to the standard kerb.

4105 46.80 Kg

50x30x15 cm



The weights indicated are the average piece weights. Weights may vary depending on the heat and humidity conditions.

Separation Kerb

It is a new model produced as an alternative to the garden border designed to be used in garden and park landscaping. It is ideal for creating different groups in flower gardens.

4107 15.80 Kg

50x20x8 cm



Low Kerb

It is a new model that is being produced as an alternative to the garden kerb designed for use in garden and park landscaping.

4121 46.70 Kg

75x20x15 cm



The weights indicated are the average piece weights. Weights may vary depending on the heat and humidity conditions.

Mortise Low Kerb

It is a new model that is being produced as an alternative to the garden kerb designed for use in garden and park landscaping.

4121 46.70 Kg

75x20x15 cm



Rain Grooves

They are products designed for water drainage purposes. They are used to direct the flow of water along roadsides and in areas where planning will be carried out. Rain grooves are available in red and gray color alternatives.

4201 29.70 Kg

30x50x10 cm

4202 13.70 Kg

30x30x10 cm

4204 7 Kg

20x20x8 cm

4205 11 Kg

25x25x8 cm

4122 11.20 Kg

22x40x7 cm



50x30x10 cm



The weights indicated are the average piece weights. Weights may vary depending on the heat and humidity conditions.

Grass Stones

They are products designed to add a pinch of green to the city architecture. Grass Stones, which we produce in sizes of 40*60*8 cm and 40*60*10 cm, are mostly used in parking lot arrangements.

4302

26 Kg

4301

34.20 Kg

40x60x8 cm

40x60x10 cm



The weights indicated are the average piece weights. Weights may vary depending on the heat and humidity conditions.

Slope Elements

Slope Elements in various interlocking shapes are one of the most aesthetic and useful materials of landscaping. It can also be used as a flower bed or a flat wall element by preventing the soil from sliding in sloping places.

Slope Kerb

It is used especially in garden and park arrangements for determining walking paths and dividing flower gardens. Slope Kerbs with red and gray color alternatives will add beauty to your gardens with their stylish design.

4401

23.80 Kg

50x30x8 cm



Slope Flower Beds

They are products designed to create planned and aesthetic areas against erosion. They are the most successful materials used in the fight against erosion since they adapt to all kinds of sloping terrain. Slope Flower Beds are also ideal for creating terraces and walls in park and garden landscapings.

4402

45.70 Kg

40x50x30 cm



The weights indicated are the average piece weights. Weights may vary depending on the heat and humidity conditions.

CONCRETE

KERB STONES



SLOPE ELEMENT PRODUCTS

4403 - Slope Element 39x30x17 cm



24.35 Kg

4406 - Slope Groove 50x50x20 cm



46 Kg

4408 - Flower Bed Retaining Element 32x37x15 cm



16 Kg

4406 - Slope Depression Trough 35x50x20 cm



24.35 Kg

4406 - Slope Depression Trough 35x50x20 cm



24.35 Kg

The weights indicated are the average piece weights. Weights may vary depending on the heat and humidity conditions.

PUMICE BLOCK WALL

ELEMENTS



Pumice Block Wall Elements

Pumice is a natural, volcanic rock formed as a result of volcanism, crystallized, independently porous, spongy, resistant to physical and chemical influences. Pumice Block Wall Elements are used as internal and external wall building elements in all kinds of structures and as suspended building elements in floors.

SOME TECHNICAL CHARACTERISTICS COMPARED WITH TSE STANDARDS

TS EN 771-3 CONCRETE MANSORY UNITS (DENSE AND LIGHT AGGREGATED)	STANDARD VALUES	PUMICE / BRIQUET BLOCKS
GROSS UNIT VOLUME MASS	B-5 / 39x10x20 = 700 kg/m ³ + % 10	672 kg/m ³
	B-6 / 39x15x20 = 750 kg/m ³ + % 10	752 kg/m ³
	B-7 / 39x19x18.5 = 750 kg/m ³ + % 10	720 kg/m ³
	B-8 / 39x25x18.5 = 750 kg/m ³ + % 10	702 kg/m ³
	B-9 / 13.9x30x20 =	
NET UNIT VOLUME MASS	B-5 / 39x10x20 = 1000 kg/m ³ + % 10	1012 kg/m ³
	B-6 / 39x15x20 = 1050 kg/m ³ + % 10	1063 kg/m ³
	B-7 / 39x19x18.5 = 900 kg/m ³ + % 10	915 kg/m ³
	B-8 / 39x25x18.5 = 1050 kg/m ³ + % 10	1057 kg/m ³
	B-9 / 39x30x20 =	
MECHANICAL COMPRESSIVE STRENGTH	B-5 / 39x10x20 > 1.8 Mpa	2.1(Mpa)
	B-6 / 39x15x20 > 1.8 Mpa	2.2 (Mpa)
	B-7 / 39x19x18.5 > 1.8 Mpa	3.1 (Mpa)
	B-8 / 39x25x18.5 > 1.8 Mpa	2.5 (Mpa)
	B-9 / 39x30x20 >	
THERMAL CONDUCTIVITY	B-5 / 39x10x20 < 0.300 W/mk	0.225 W/mk
	B-6 / 39x15x20 < 0.300 W/mk	0.339 W/mk
	B-7 / 39x19x18.5 < 0.300 W/mk	0.193 W/mk
	B-8 / 39x25x18.5 < 0.300 W/mk	0.193 W/mk
	B-9 / 39x30x20 <	

Technical Specifications

1. Heat and Sound Insulated:

Pumice (pumice), which is used as a raw material along with the production technology, provides heat and sound insulation due to its natural properties.

2. Earthquake Resistant (Solid):

Construction elements produced using pumice are more durable than other construction elements and are extremely resistant to earthquakes thanks to their high modulus of elasticity. (The elasticity coefficient against breaking due to earthquake waves is 70.000 kg/cm².) Since it is 6 times more elastic than concrete, it can absorb shocks more easily without breaking and cracking, and provides resistance against earthquakes.

3. Economical:

While rough and fine plaster is needed on walls made with other building elements in the construction of walls, Blokbims is economical because it brings a single layer plaster solution on external walls. Due to the smooth surface and decorative appearance of the products, it is also possible to build a wall without plastering. Interior walls are plastered directly with gypsum plaster. It also provides less plaster usage due to its smooth surface.

4. Fire Resistant:

It is more resistant to fire than other building materials. It has a high melting temperature and does not emit any gas harmful to the environment when melted. It minimizes fire damage. It has the feature of not catching fire for a minimum of 239 minutes at a combustion temperature of 1100 C, not losing its shape and size and not emitting smoke. Fire resistance according to DIN 4102 standards: It is extremely fire resistant.

5. Natural:

Blokbims is natural because no foreign product is added other than natural materials and cement.

6. Balances the Ambient Humidity:

It has the ability to contain a high amount of water vapor in its structure, so it is wetproof. It also has the feature of making natural ventilation into the space. Due to its porous and natural structure, it creates breathing, healthy and odor-free spaces.

7. Environmentally Friendly:

There is an extremely low energy requirement in pumice block construction. All that is needed is vibration energy. Absolutely no chemical or biological techniques are used in production. There is no waste. In addition, there is absolutely no danger in terms of worker health during production.

8. Light:

Another important feature of Pumice Block Wall Elements is their lightness. (The specific weight of pumice (pumice) is 00.75 kg/dm³, the unit volume weight of Pumice Block Wall Elements is 0.6 kg/dm³). It reduces the load on the building foundation. Considering the finished wall weights, the walls made with Pumice Block Wall Elements are lighter than the walls made with other building products.

9. Precise Dimension:

Pumice Block Wall Elements building materials are produced with millimetric sensitivity by using the opportunities provided by superior technology. Pumice Block Wall Elements building materials are produced with millimetric sensitivity by using the opportunities provided by superior technology.

- Reducing labor costs by using pumice
- Possibility of sheathing that does not require plaster
- Reducing the load on the carrier system
- A smoother floor
- Thermal insulation that does not bring additional costs
- Advantage of fire-free installation
- Net dimensions in accordance with the standard

PUMICE BLOCK WALL ELEMENT PRODUCTS

4504 - Mortise Pumice in 39x10x20 cm



The inner and outer wall thicknesses are net 2 cm.

5.50 Kg

4508 - Mortise Pumice in 39x15x20 cm

The outer wall thickness is net 2.5 cm.



The inner wall thickness is a net 2 cm.

9.00 Kg

4512 - Mortise Pumice in 39x19x18.5 cm



The inner and outer wall thicknesses are net 3 cm.

10.00 Kg

4513 - Mortise Pumice in 39x25x18.5 cm



The inner and outer wall thicknesses are net 3 cm.

12.00 Kg

4511 - Mortise Pumice in 39x30x20 cm



The inner and outer wall thicknesses are net 3 cm.

14.15 Kg

4505 - Asmolem in 39x25x20 cm



The inner and outer wall thicknesses are net 3 cm.

7.85 Kg

4515 - Pumice Concrete in 39x19x20 cm



The inner and outer wall thicknesses are net 3 cm.

23.00 Kg

4514 - Pumice Concrete in 39x19x20 cm



The inner and outer wall thicknesses are net 3 cm.

18.80 Kg

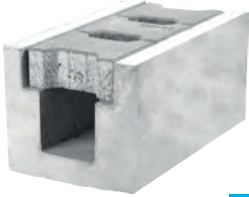
The weights indicated are the average piece weights. Weights may vary depending on the heat and humidity conditions.

PRECAST CONCRETE

ELEMENTS

PRECAST CONCRETE ELEMENT PRODUCTS

Drainage Groove in 30x50x25 cm (4404)



55 Kg

Drainage Groove without Anchorage 30x50x25 cm (4404)



Concrete Channel
55 Kg

Concrete Cover
18.50 Kg

Drainage Groove Corner Element in 50x50x25 cm (4407)



80 Kg

Drainage Groove in 30x25x28,5 cm (4404)



Concrete Channel
27 Kg

Concrete Cover
14 Kg

Drainage Groove in 30x25x28,5 cm (4404)



Concrete Channel
27 Kg

Concrete Cover
28 Kg

Drainage Groove in 30x25x28,5 cm (4404)



27 Kg

Anchored Drainage Groove in 25x50x30 cm (4415)



50 Kg

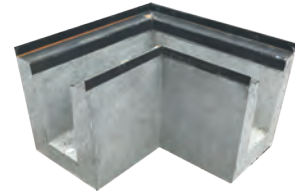
Anchored Drainage Groove Element in 25x50x30 cm (4415)



Concrete Channel
50 Kg

Concrete Cover
14.75 Kg

Anchored Drainage Groove Corner Element in 50x50x25 cm (4415)



76 Kg

Anchored Drainage Groove Element in 41x50x36 cm (4415)



73 Kg

50x(12-18)x20 cm Precast Concrete Kerb in (Special Production)



38 Kg

The weights indicated are the average piece weights. Weights may vary depending on the heat and humidity conditions.

PRECAST CONCRETE ELEMENT PRODUCTS

Fence Post in 10x10x250cm (5202)
8x8x250cm (5201)



60 Kg

47 Kg

Fence Post in 10x10x250 cm
Strut (5212) in 8x8x250 cm (5211)



55 Kg

43 Kg

Prefabricated Concrete Channel Top
Cover: 62x125x6.5 cm
Channel: 62x125x30 cm (4427)



Manhole in 100x120x138 cm (4409)



1460 Kg

Additional Room in
84x104x90 cm (4410)



600 Kg

100x120x205cm
Solar Panel Pedestal (4128)



900 Kg

Box Panel Pedestal in
50x96x50 cm (4129)



190 Kg

Lighting Pole Pedestal in 60x60x60
cm (Upper Part 35x35 cm) (4405)



310 Kg

Lighting Pole Pedestal in 65x65x40 cm
(Upper Part 25x25 cm) (4405)



137 Kg

The weights indicated are the average piece weights. Weights may vary depending on the heat and humidity conditions.

PRECAST CONCRETE ELEMENT PRODUCTS

Seating Bench (5405) H-46
Width-35 Length-207



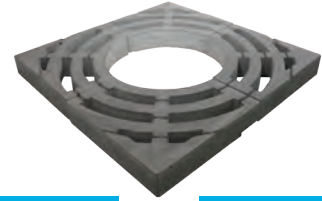
Takım: 340 Kg

Seating Bench (5406) H-50
Width-50 Length-240



Takım: 260 Kg

Tree Bottom Grid 100x100 cm (4114)



Takım: 127 Kg

1 Adet: 31.75 Kg

Tree Bottom Kerb in 100x100 cm (4127)



Takım: 116 Kg

1 Adet: 29 Kg

Cork Stop H-32 (5401-B)



27 Kg

Cork Stop H-32 (5401-K)



27 Kg

Wheelchair Ramp (4416-4417-4418)



54 Kg

46 Kg

54 Kg

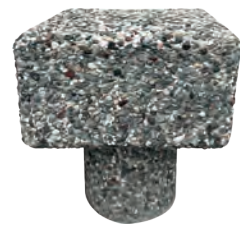
Takım: 154 Kg

Cork Type Seating Type H-56



122 Kg

Cork Type Seating Type H-53



Manhole Cover Diameter-80 (4113)



200 Kg

Eagle (5501)



500 Kg

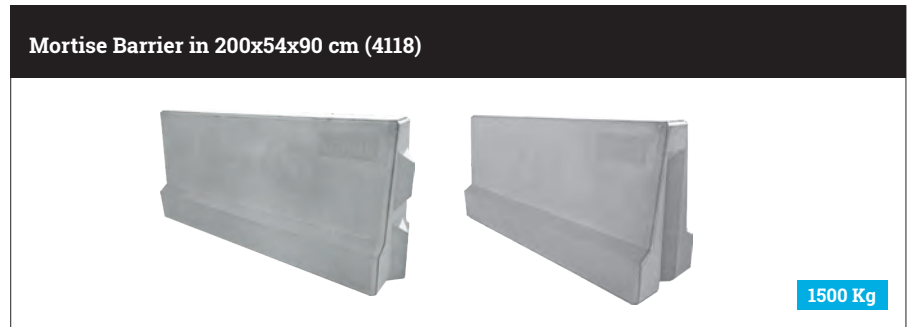
The weights indicated are the average piece weights. Weights may vary depending on the heat and humidity conditions.

CONCRETE

BARRIER

Concrete Barrier (New Jersey Type)

Özkul Beton Bariyer, specially designed to reduce the damage to occur in the event of a collision with vehicles, is a concrete structure used to separate vehicle traffic in land transportation. You can contact us to see our concrete barriers, which can be designed as single and double sided and produced in certain sizes.



ADAPTATION VISUALS



The weights indicated are the average piece weights. Weights may vary depending on the heat and humidity conditions.

GARDEN

ELEMENTS



Garden Elements

Our collection of garden elements consisting of Flower Beds, Garden Fences, Fence Posts, pole Stands and Stops is designed to complete your park, garden and environmental arrangements.

Flower beds are manufactured in different models and sizes according to the place and purpose of use. Our flower beds will bring a different style to your parks and gardens with their stylish designs that allow plants to grow healthily.

Kerbs, one of the most important elements of environmental and road landscaping, are manufactured in different sizes according to their useful place and purpose. Concrete kerb stones with red and gray color alternatives can also be produced in the desired colors in special productions.



GARDEN ELEMENT PRODUCTS

Flower 1



H 40 - En 48 - H 48 - Kg 76

Flower 2



H 42 - W 57 - H 57 - Kg 110

Flower 3



H 30 - W 55 - H 55 - Kg 93

Flower 4



H 40 - W 48 - H 48 - Kg 105

Flower 5



H 40 - W 60 - H 60 - Kg 111

Flower 6



H 46 - Diameter 48 - Kg 108

Flower 7



H 50 - W 50 - H 50 - Kg 150

Flower 8



H 35 - Diameter 100 - Kg 265

Flower 9



H 20 - W 30 - H 30 - Kg 22

Flower 10



H 60 - Çap 70 - Kg 235

Flower 11



H 54 - W 45 - H 45 - Kg 72

Flower 12



H 52 - W 40 - H 120 - Kg 217

Flower 13



H 50 - W 40 - H 100 - Kg 147

Flower 14



H 40 - W 40 - H 80 - Kg 123

Flower 15



H 39 - W 30 - H 100 - Kg 118

Wasch concrete application is made to some models of our flower beds.

GARDEN ELEMENT PRODUCTS

Flower 16



H 46 - W 15 - H 100 - Kg 85

Flower 17



H 48 - W 30 - H 100 - Kg 133

Flower 18



H 40 - W 40 - H 90 - Kg 155

Flower 19



H 76 - W 30 - H 100 - Kg 166

Flower 20



H 35 - W 30 - H 75 - Kg 79

Flower 21



H 50 - W 48 - H 48 - Kg 150

Flower 22



H 49 - W 49 - H 50 - Kg 150

Flower 23



H 40 - W 40 - H 32 - Kg 55

Flower 24



H 35 - W 35 - H 50 - Kg 72

Flower 25



H 60 - Diameter 50 - Kg 350

Flower 26



H 90 - Diameter 60 - Kg 560

Flower 27



H 80 - Diameter 90 - Kg 420

Flower 29



H 87 - W 80 - H 80 - Kg 560

Flower 30

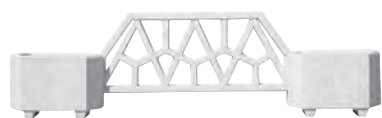


H 68 - W 60 - H 140 - Kg 400

Wasch concrete application is made to some models of our flower beds.

GARDEN ELEMENT PRODUCTS

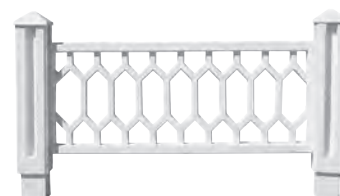
Flowering Fence - 5301



Sunny Fence - 5303



Honeycomb Fence - 5302



Nostalgia Fence - 5304

The Nostalgic Hedge post
5317 - 5314 - 5315 -5316

Honeycomb Fence - Double - 5358



GARDEN ELEMENTS	WIDTH	LENGTH	HEIGHT	WEIGHT
FLOWERING FENCE	36 cm	280 cm	77 cm	269 Kg / Set
NOSTALGY FENCE	18.5 cm	150 cm	65 cm	118 Kg / Set
HONEYCOMB FENCE	5 cm	180 cm	95 cm	170 Kg / Set
HONEYCOMB FENCE-DOUBLE	5 cm	180 cm	180 cm	298 Kg / Set
SUN FENCE	36 cm	270 cm	87 cm	273 Kg / Set
CORK STOP	30 cm Diameter		33 cm	26 Kg

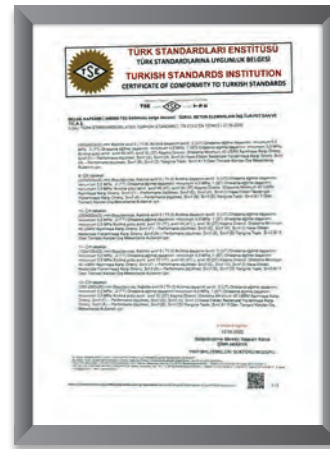






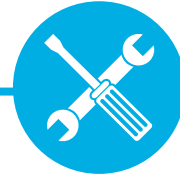
www.ozkul.com.tr







Installation



- 1-** In very cold, very hot weather and rainy weather (if outdoors), the assembly process should be interrupted.
- 2-** Terrazzo products and steps should be installed at the application site within 1 month.
- 3-** Our products are a combination of natural stones. It may show tonal differences caused by the structure of natural stones. Therefore, the assembly should be carried out by considering the production date and pallet sequence number.
- 4-** Floor mortar thickness should be 3 to 7 cm. There should be no mortar gap under the materials.
- 5-** If possible, the materials should be laid with 2-4 mm joints. The grouting process should be repeated at least twice (stage).
- 6-** When the flooring process is completed, there should be no nails and/or teeth between the materials. A rubber mallet should be used for placement.
- 7-** During and after the assembly, it should be paid attention to surface cleaning.
- 8-** Joint process should be done in accordance with the instructions. It should not be stepped on the material until the joint process is completed.
- 9-** In order to see the final state of the finished products, it is necessary to wait for the mortar water and the joint filling material to dehumidify. While the products are moist, they may show a tonal difference in whole or in part.



Protection / Cleaning

- 1-** Acid and alkali-containing cleaning products should never be used for cleaning products. Neutral cleaning products produced for cement-based products should be used by changing the cleaning water frequently.
- 2-** Cleaning material recommendation: Potassium soap (Arabic Soap).
- 3-** Wood shavings and corrugated cardboard should be used for the preservation of their products.
- 4-** All products for polishing and protection purposes that you intend to apply on the surface of the products must be used after the sample application is approved by Özkul Beton Elemanları A.Ş.

Warning

- 1-** Discoloration and fading may occur on the parts of our products that are directly exposed to the sun.
- 2-** In case of product selection (with dye additives) other than natural colors and fading in these products, the responsibility belongs to the buyer.
- 3-** The products have features arising from the structure of mains water.

www.ozkul.com.tr

ozkul@ozkulkaro.com.tr

   OZKUL KARO

Headquarter: Demirlibaççe Mahallesi
Plevne Caddesi No:28 Mamak / ANKARA
Phone: +90 312 363 68 78 - Fax: +90 312 362 24 18

Factory: Balıkhisar Mah. (Ankara Çubuk Yolu)
Ankara Bul. No:13/1 Akyurt / ANKARA
Phone: +90 312 398 02 50 - Fax: +90 312 398 02 53